

Understanding the MI-MORT puzzle

Overview

- Established in 2007
- Requested by local Medical Examiner (do not self deploy)
- Specialized team of volunteers to support mass fatality response needs
- Collaborative effort between:
 - Michigan Department of Health and Human Services Bureau of EMS, Trauma and Preparedness
 - Michigan Funeral Directors Association
 - Michigan Dental Association Dental Identification Team
 - Disaster Assistance Recovery Team
 - Michigan State University Forensic Sciences

Mi-Volunteer Registry

Volunteers in Registry with provides:

- Background checks
- Notification Protocols
- Legal protection



Scalable to support M.E. needs for Mass Fatality Response

- State of Michigan asset
- Mass Fatality = Number of dead exceeds local or regional resources
- Medical Examiner makes request through Emergency Management
- Provides technical assistance and personnel as requested and available to:
 - Recover remains
 - Identify and process deceased victims in a dignified manner
 - Gather information from surviving family members
 - Provide documentation

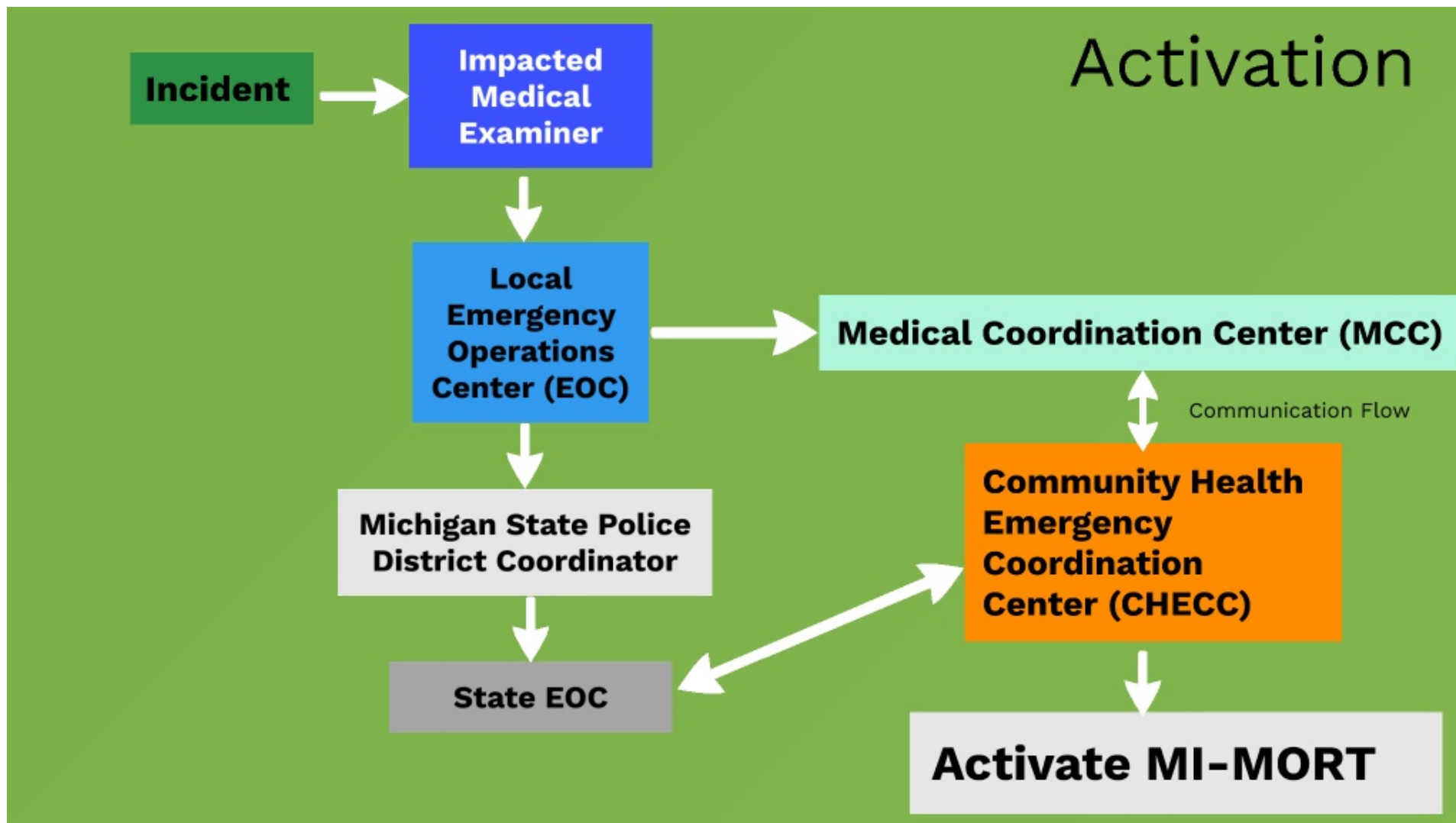
Medical Examiners Act 181 of 1953

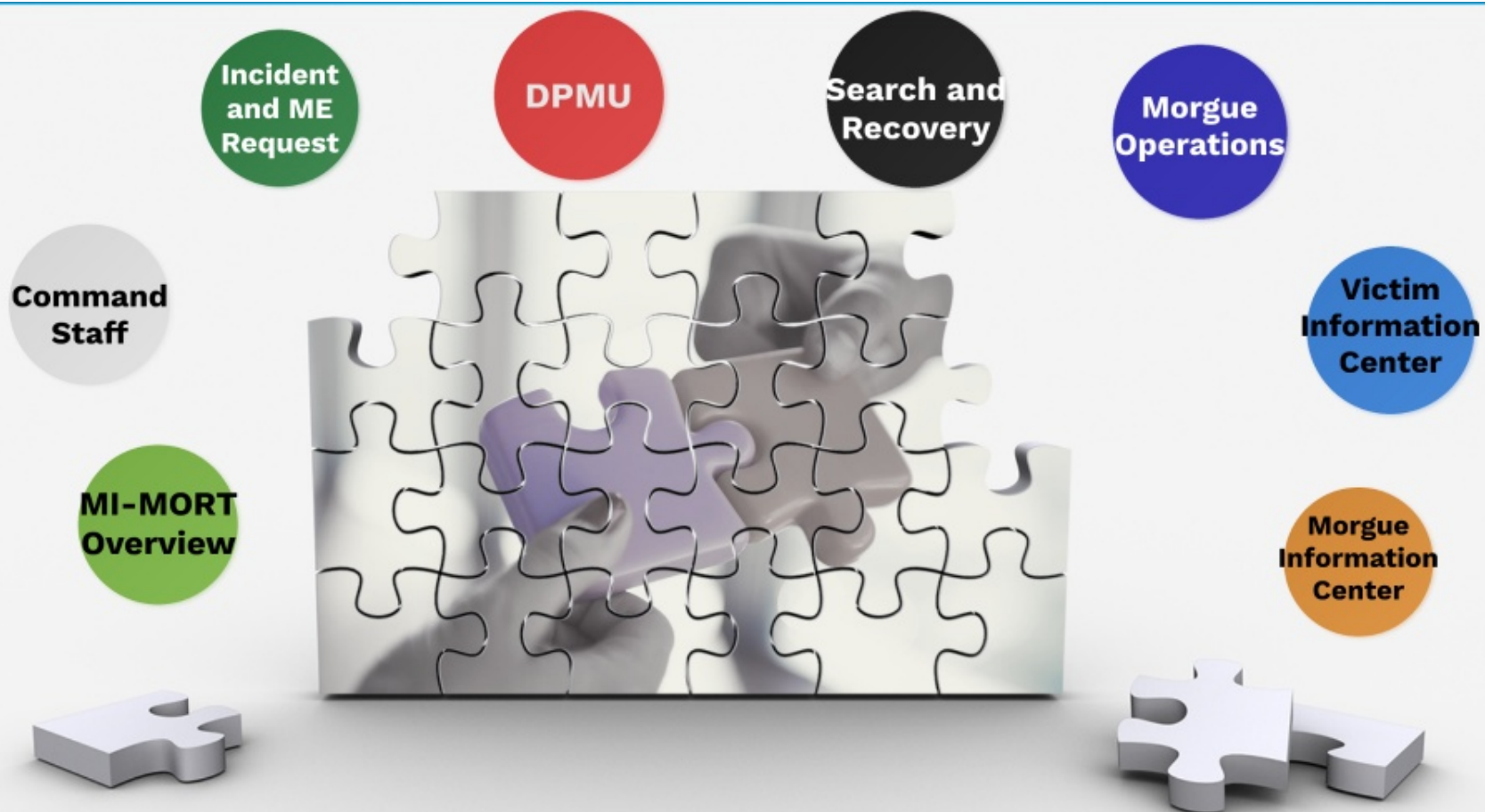
ME are required by law to conduct investigations into the cause of death in cases of persons who come to their death:

- suddenly,
- unexpectedly,
- accidentally,
- violently,
- or as a result of any suspicious circumstances.
-

Duty does not change when victims are multiple

ME for the county in which the deaths occur retains jurisdiction over the bodies.





Understanding the MI-MORT puzzle

Incident Command Staff

MI-MORT uses the ICS structure scaled to ME request and needs

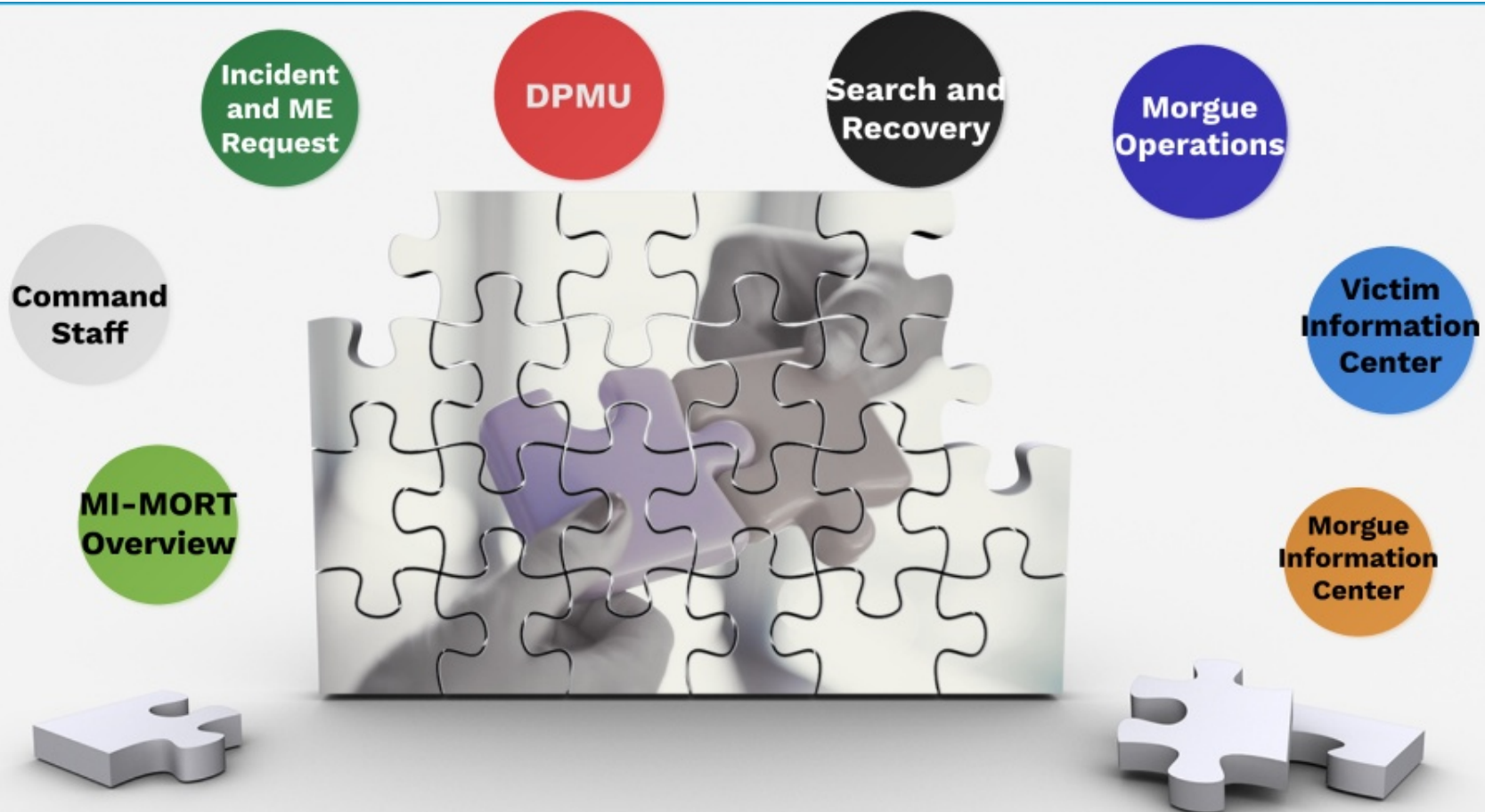
- MI-MORT Commander
- Operations Section
- Planning Section
- Logistics Section
- Administration and Finance Section

Command Staff

- Meets monthly to work on plans, training, and exercises
- Manages MI-MORT equipment
- Coordinates with State
- Works with Mi-Volunteer Registry Experts

Components of MI-MORT Command Staff

- Commander
- Administration
- MI Bureau of EMS, Trauma, and Preparedness Support
- Logistics, Safety, and Security (Disaster Portable Morgue Unit)
- Information Technology
- Volunteer Management
- Search and Recovery (Disaster Assistance Recovery Team - DART)
- Victim Transport
- Morgue Operations (various sections)
- Victim Information Center - Family Assistance Center
- Morgue Information Center



Understanding the MI-MORT puzzle

Incident Happens -

Medical Examiner requests help



Site of Incident
Disaster Assistance Recovery Team

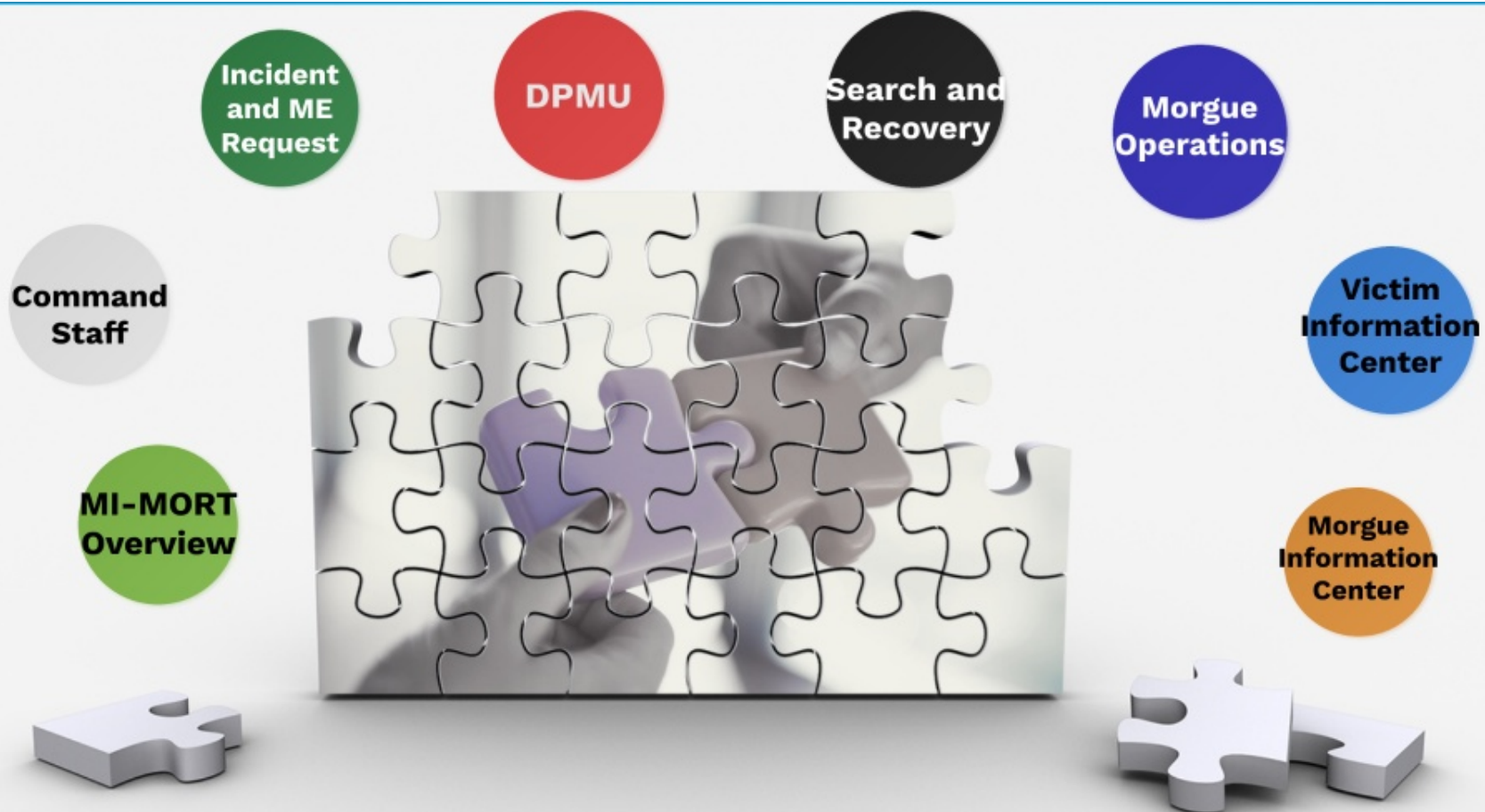
Disaster Portable Morgue Unit
Morgue Operations
Human Remains Management



Victim Information Center / Family Assistance Center



Morgue Information Center

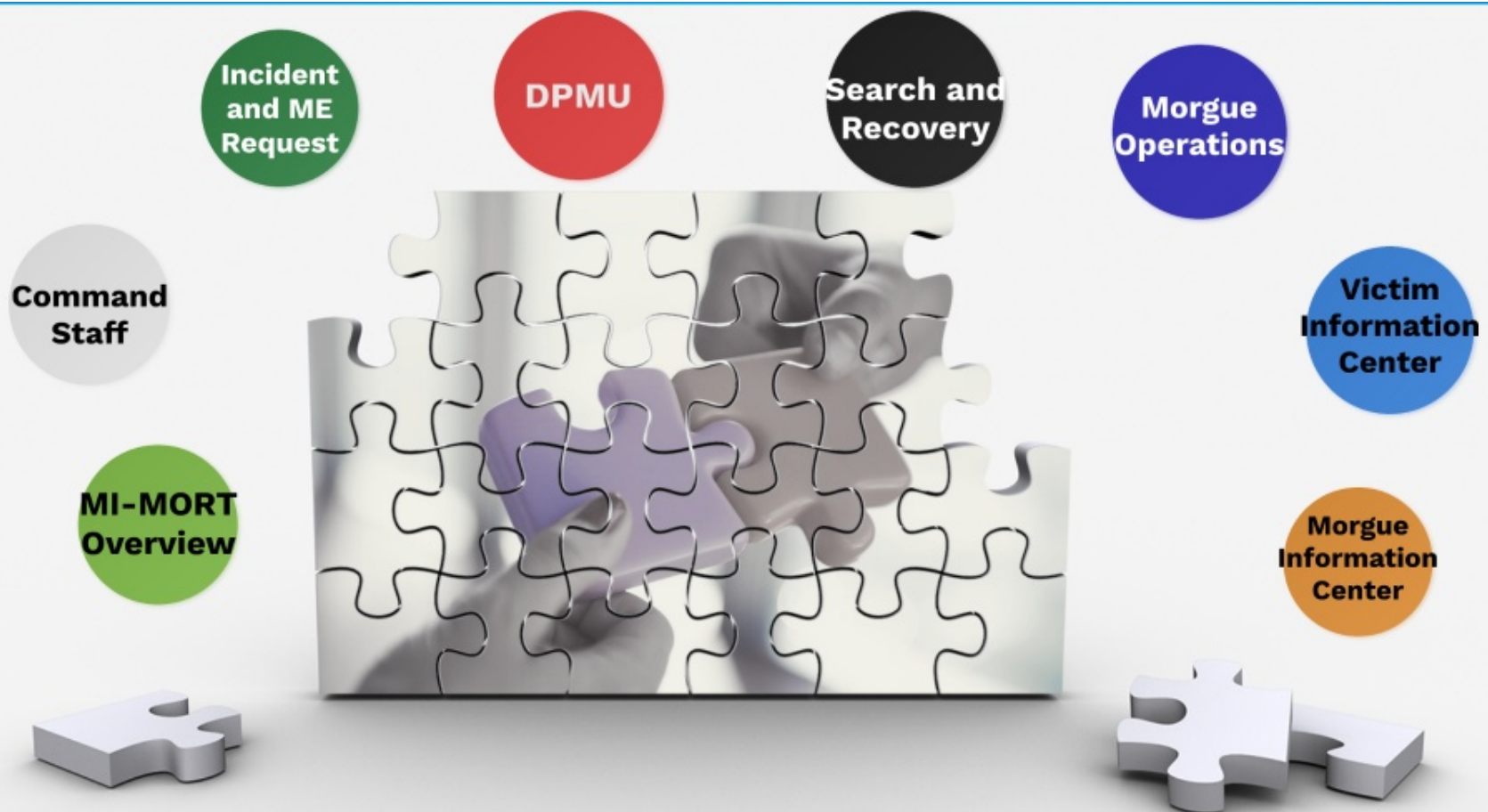


Understanding the MI-MORT puzzle

DPMU

Disaster Portable Morgue Unit

- Maintained in warehouse
- Contains equipment and supplies
- Segregated into kits by section
- Designed to be erected as needed (scalable)



Understanding the MI-MORT puzzle

Disaster Assistance Recovery Team

Supports local Medical Examiners and Primary Investigators through scene documentation and the recovery / collection of human remains and personal; effects at a mass fatality scene



Remains Management

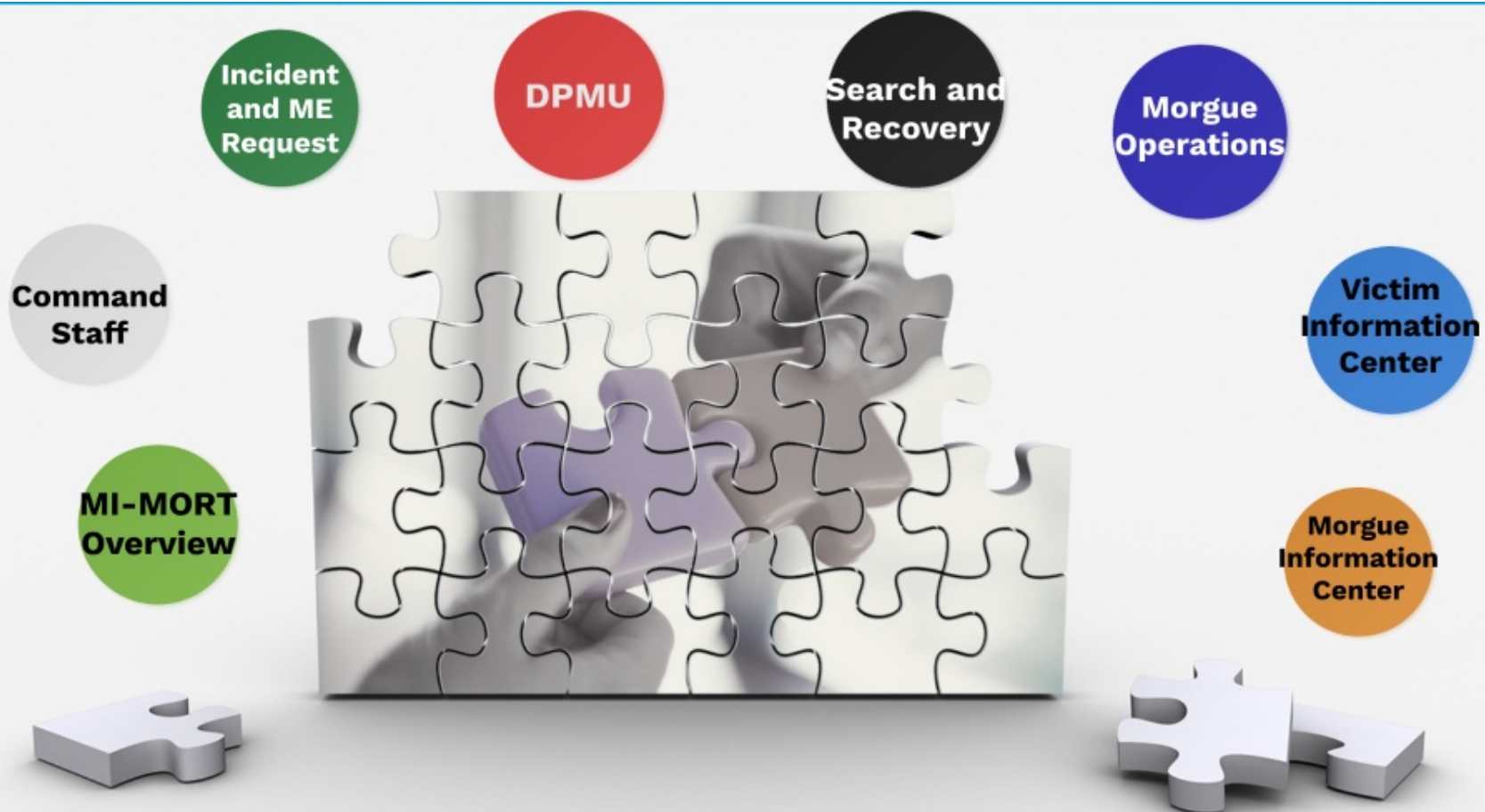


Remains management
takes custody from
DART and transports to
Morgue Operations



Tracks remains in
morgue and stores in
Mobil Emergency
Remains Cooling
System (MERC)





Understanding the MI-MORT puzzle

Morgue Operations



Triage



Personal
Effects



Fingerprint



Photography



DNA



Pathology



Anthropology



Dental

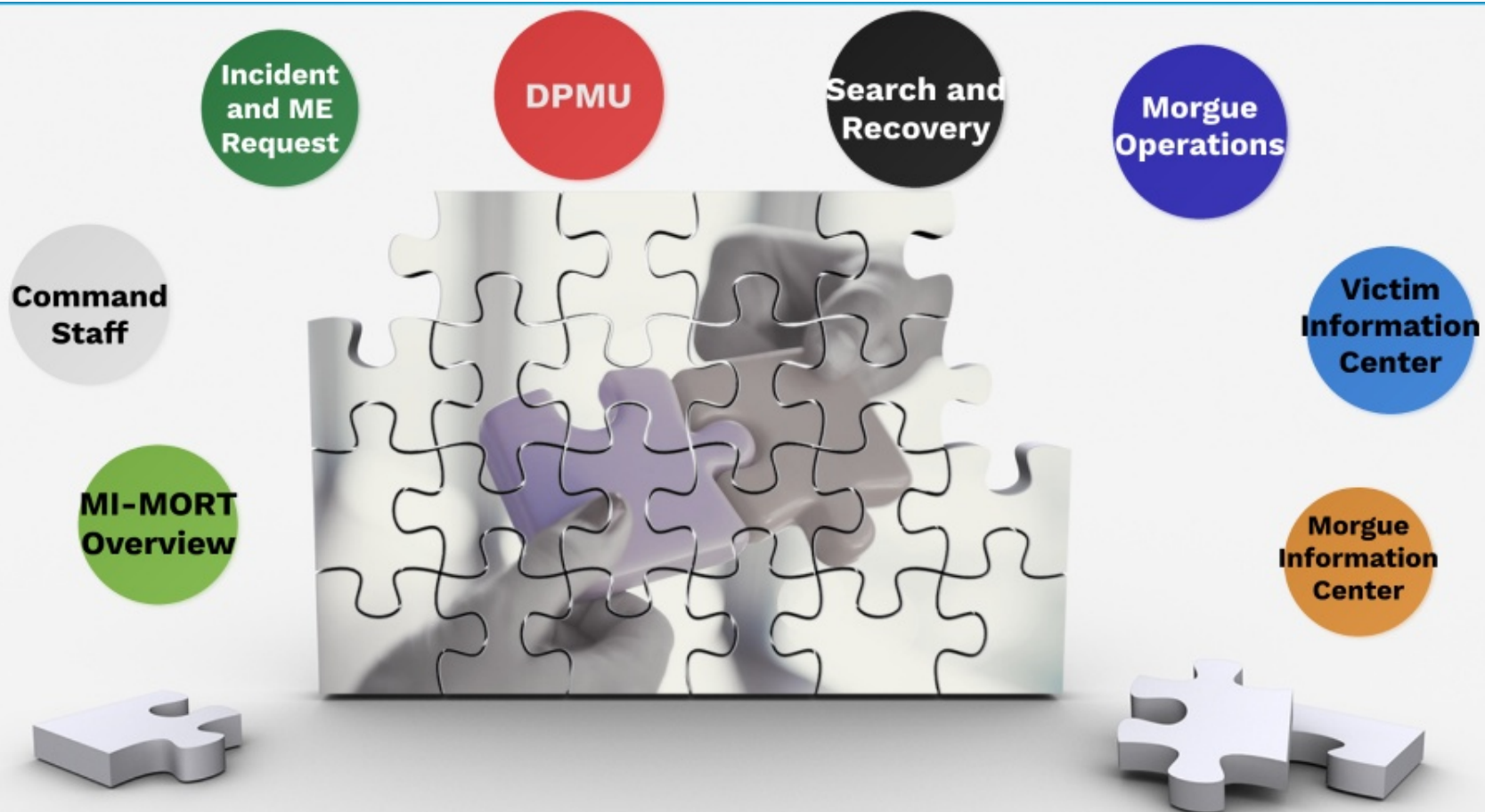


X-Ray

Remains go through stations needed to help with identification



Each remain has a unique number for documenting findings on tracking sheets



Understanding the MI-MORT puzzle

Victim Information Center

Located away from morgue and site
Might be at Family Assistance Center

Step #1

Receive notification from Next of Kin, family members, and friends of possible victims

Step #2

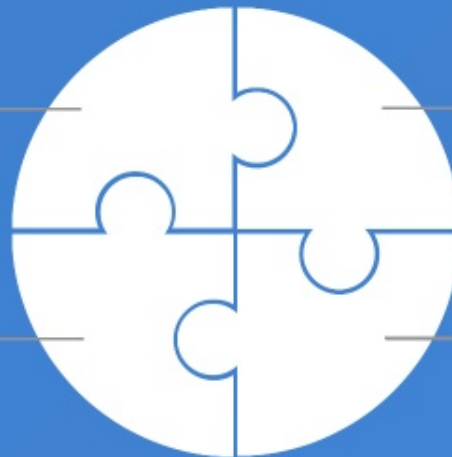
Interviews to collect ante-mortem (before possible death) information; documented on VIP paperwork

Step #3

Enter data from interview into Victim Information Profile (VIP) Database System

Step #4

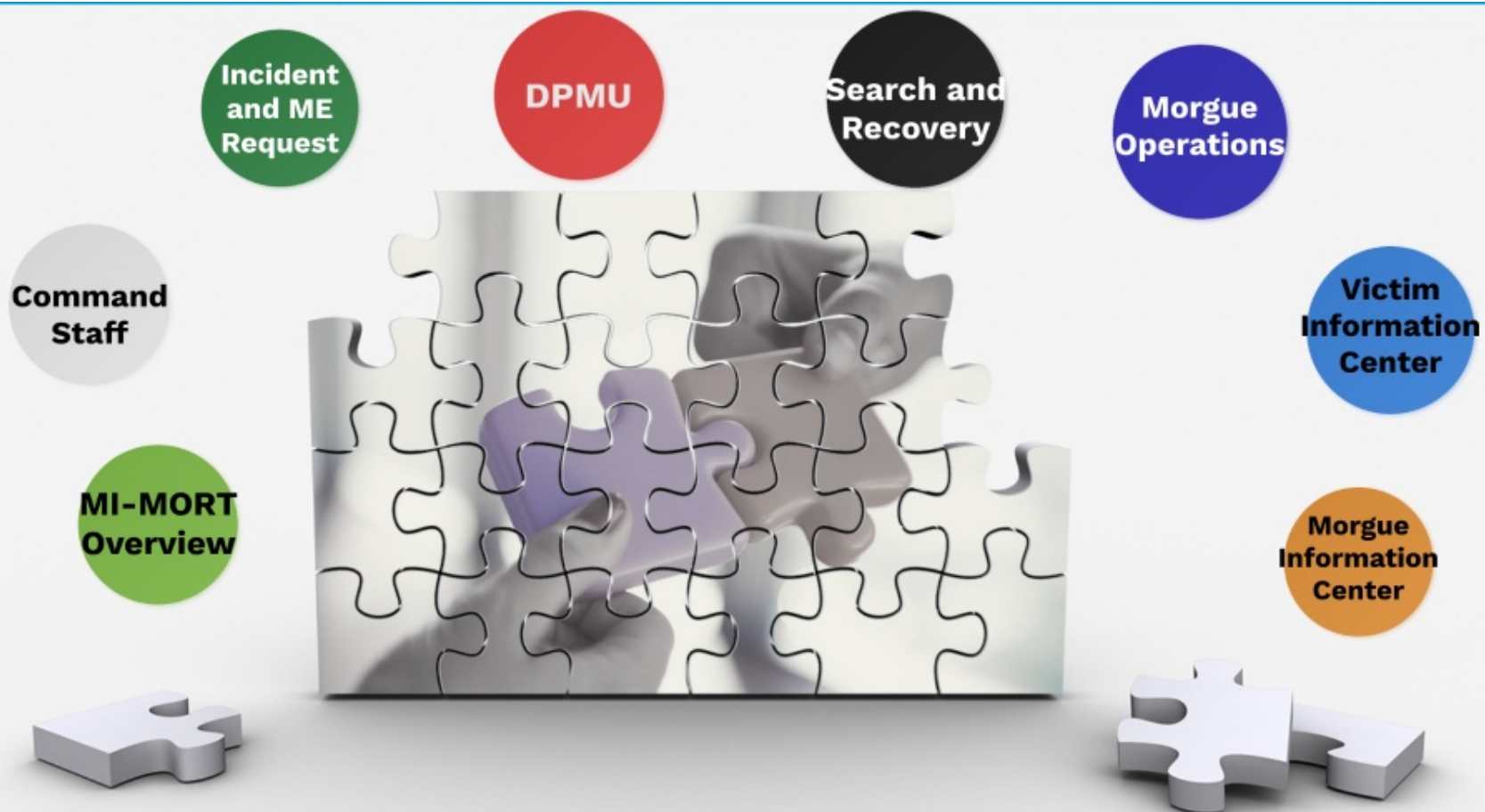
Collect DNA familial sample, photos, records, etc. Update VIP



VIC and MIC connected

Staff from the VIC could also work in the MIC as needed

VIC needs to be in continuous contact with MIC on status and for questions and answers



Understanding the MI-MORT puzzle

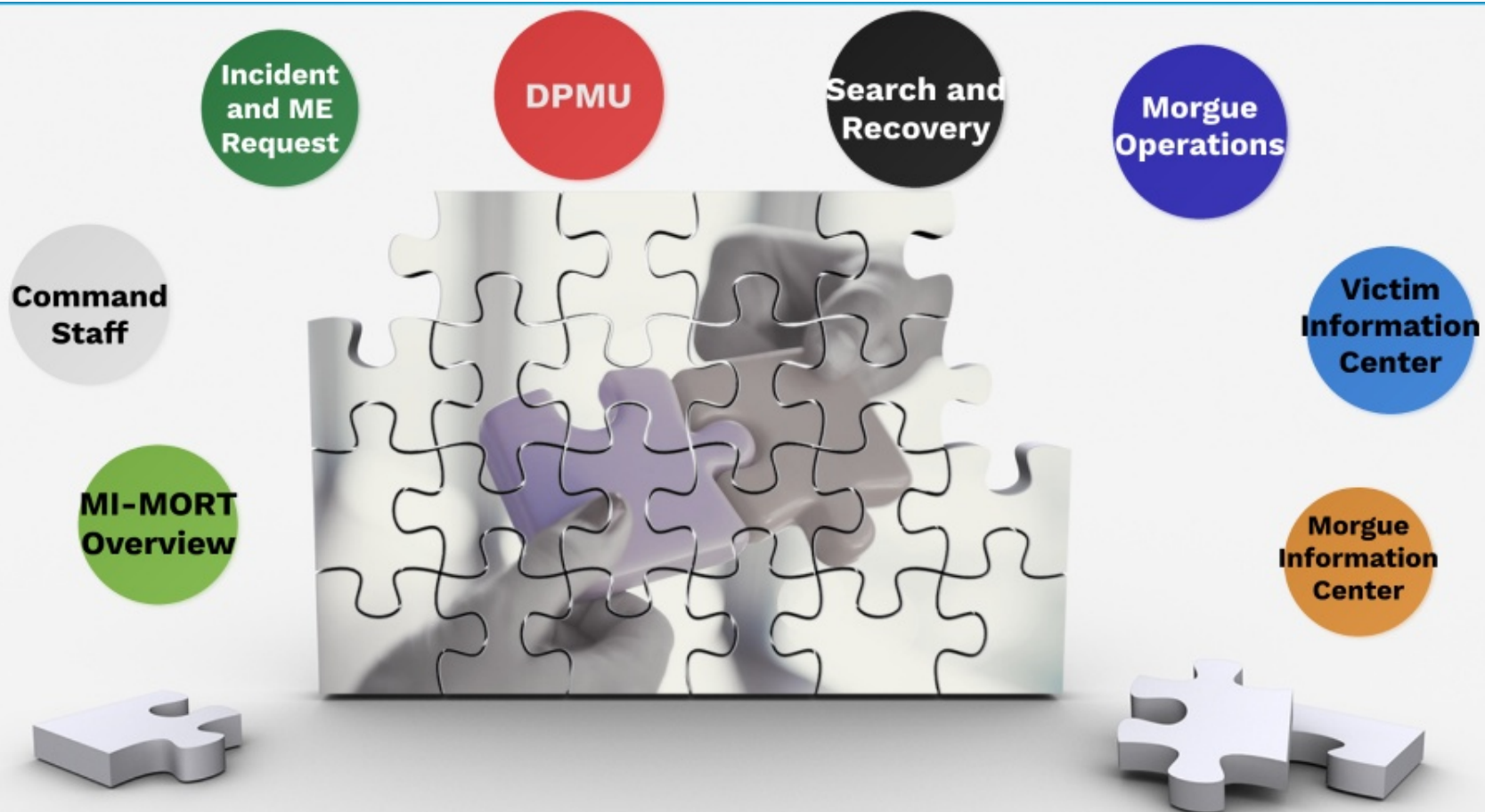
Morgue Information Center

Located close to Morgue Operations

- Assigns remains number
- Creates paperwork files
- Data Entry into Victim Information Program (VIP) from post-mortem data
- Medical records followup
- Receipt and distribution of ante-mortem records
- Fingerprint ante and post-mortem comparison
- Dental ante and post-mortem comparison
- Records management



Goal is to help ME identify victim



Understanding the MI-MORT puzzle